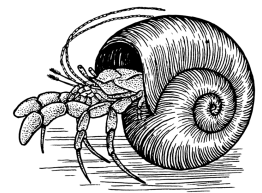


Name _____ Datum _____ Klasse _____



© <https://aufgaben.schulkreis.de>

Punkt-vor-Strich, Blatt 3

Zahlenraum bis 20, 2 Operatoren

Aufgabe 1

$1 \cdot 20 : 10 = \underline{\quad}$

$5 \cdot 2 + 10 = \underline{\quad}$

$16 : 4 - 3 = \underline{\quad}$

$12 - 15 : 5 = \underline{\quad}$

$2 + 16 - 13 = \underline{\quad}$

$10 + 10 - 11 = \underline{\quad}$

$8 \cdot 2 - 5 = \underline{\quad}$

$13 - 12 + 19 = \underline{\quad}$

Aufgabe 2

$3 + 1 \cdot 1 = \underline{\quad}$

$14 + 16 : 8 = \underline{\quad}$

$8 + 10 : 5 = \underline{\quad}$

$10 \cdot 1 - 2 = \underline{\quad}$

$1 + 6 \cdot 1 = \underline{\quad}$

$9 : 3 - 2 = \underline{\quad}$

$10 + 14 : 14 = \underline{\quad}$

$20 : 2 - 7 = \underline{\quad}$

Aufgabe 3

$\underline{\quad} \cdot 18 : 3 = 6$

$14 + 20 : \underline{\quad} = 16$

$18 : \underline{\quad} \cdot 1 = 6$

$13 - \underline{\quad} + 3 = 14$

$9 - \underline{\quad} \cdot 1 = 8$

$14 + \underline{\quad} : 2 = 16$

$3 - 2 \cdot \underline{\quad} = 1$

$10 \cdot \underline{\quad} : 4 = 5$

Aufgabe 4

$\underline{\quad} : 2 - 1 = 4$

$5 \cdot \underline{\quad} + 12 = 17$

$16 - \underline{\quad} + 2 = 8$

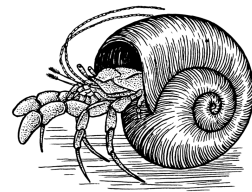
$6 \cdot 2 : \underline{\quad} = 2$

$4 \cdot 5 - \underline{\quad} = 1$

$\underline{\quad} \cdot 13 - 5 = 8$

$16 : \underline{\quad} + 9 = 11$

$20 : \underline{\quad} + 14 = 16$



Lösung: Punkt-vor-Strich, Blatt 3

Zahlenraum bis 20, 2 Operatoren

Aufgabe 1

$$1 \cdot 20 : 10 = \underline{2}$$

$$5 \cdot 2 + 10 = \underline{20}$$

$$16 : 4 - 3 = \underline{1}$$

$$12 - 15 : 5 = \underline{9}$$

$$2 + 16 - 13 = \underline{5}$$

$$10 + 10 - 11 = \underline{9}$$

$$8 \cdot 2 - 5 = \underline{11}$$

$$13 - 12 + 19 = \underline{20}$$

Aufgabe 2

$$3 + 1 \cdot 1 = \underline{4}$$

$$14 + 16 : 8 = \underline{16}$$

$$8 + 10 : 5 = \underline{10}$$

$$10 \cdot 1 - 2 = \underline{8}$$

$$1 + 6 \cdot 1 = \underline{7}$$

$$9 : 3 - 2 = \underline{1}$$

$$10 + 14 : 14 = \underline{11}$$

$$20 : 2 - 7 = \underline{3}$$

Aufgabe 3

$$\underline{1} \cdot 18 : 3 = 6$$

$$14 + 20 : \underline{10} = 16$$

$$18 : \underline{3} \cdot 1 = 6$$

$$13 - \underline{2} + 3 = 14$$

$$9 - \underline{1} \cdot 1 = 8$$

$$14 + \underline{4} : 2 = 16$$

$$3 - 2 \cdot \underline{1} = 1$$

$$10 \cdot \underline{2} : 4 = 5$$

Aufgabe 4

$$\underline{10} : 2 - 1 = 4$$

$$5 \cdot \underline{1} + 12 = 17$$

$$16 - \underline{10} + 2 = 8$$

$$6 \cdot 2 : \underline{6} = 2$$

$$4 \cdot 5 - \underline{19} = 1$$

$$\underline{1} \cdot 13 - 5 = 8$$

$$16 : \underline{8} + 9 = 11$$

$$20 : \underline{10} + 14 = 16$$