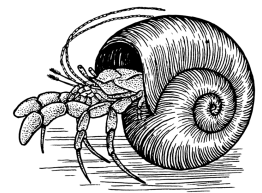


Name _____ Datum _____ Klasse _____



© <https://aufgaben.schulkreis.de>

Klammerrechnen, Blatt 3

Zahlenraum bis 50, 4 Operatoren

Aufgabe 1

$$(2 \cdot 8) : (5 - 1) + 4 = \underline{\quad}$$

$$(20 - 18) \cdot 36 : 6 + 12 = \underline{\quad}$$

$$(7 + 1) \cdot 18 : 9 - 1 = \underline{\quad}$$

$$3 \cdot 9 + 28 - (20 : 4) = \underline{\quad}$$

$$(16 : 2) + (8 - 7) \cdot 1 = \underline{\quad}$$

$$13 \cdot 2 : (30 - 29) + 1 = \underline{\quad}$$

$$(28 \cdot 1) + 36 : 2 - 2 = \underline{\quad}$$

$$(30 : 30) \cdot (40 - 3) + 7 = \underline{\quad}$$

Aufgabe 2

$$(35 - 24) \cdot (3 + 9) : 4 = \underline{\quad}$$

$$(37 - 25) : 1 + 1 \cdot 3 = \underline{\quad}$$

$$36 : 4 + (1 \cdot 13) - 11 = \underline{\quad}$$

$$2 \cdot 7 + 48 : (4 - 1) = \underline{\quad}$$

$$30 + (14 : 4) \cdot 8 - 28 = \underline{\quad}$$

$$8 : 2 + (3 \cdot 12) - 4 = \underline{\quad}$$

$$32 \cdot 1 + (29 - 5) : 4 = \underline{\quad}$$

$$(44 : 1) - (3 + 1) \cdot 10 = \underline{\quad}$$

Aufgabe 3

$$(4 : 2) \cdot 13 - \underline{\quad} + 6 = 30$$

$$1 \cdot 27 : \underline{\quad} + (26 - 20) = 15$$

$$2 \cdot 22 : (28 - 27) + \underline{\quad} = 47$$

$$(37 : 1) - \underline{\quad} \cdot (21 + 3) = 13$$

$$39 - (\underline{\quad} : 8) \cdot (1 + 3) = 36$$

$$26 : 26 \cdot (\underline{\quad} + 30) - 30 = 4$$

$$2 \cdot (21 - \underline{\quad}) : 2 + 21 = 6$$

$$10 \cdot \underline{\quad} : (9 - 7) + 8 = 28$$

Aufgabe 4

$$(11 + 4) \cdot (19 - 13) : \underline{\quad} = 30$$

$$9 + 8 \cdot (\underline{\quad} - 5) : 15 = 25$$

$$23 + \underline{\quad} - 14 \cdot (1 : 2) = 19$$

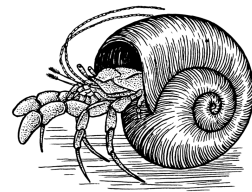
$$44 : \underline{\quad} \cdot 5 + (44 - 48) = 16$$

$$(1 \cdot \underline{\quad}) + (37 : 1) - 28 = 21$$

$$(12 \cdot 1) - 2 + \underline{\quad} : 2 = 18$$

$$(33 - \underline{\quad}) : (4 + 5) \cdot 1 = 3$$

$$(5 + 37) - (18 : \underline{\quad}) \cdot 1 = 36$$



Lösung: Klammerrechnen, Blatt 3

Zahlenraum bis 50, 4 Operatoren

Aufgabe 1

$$(2 \cdot 8) : (5 - 1) + 4 = \underline{8}$$

$$(20 - 18) \cdot 36 : 6 + 12 = \underline{24}$$

$$(7 + 1) \cdot 18 : 9 - 1 = \underline{15}$$

$$3 \cdot 9 + 28 - (20 : 4) = \underline{50}$$

$$(16 : 2) + (8 - 7) \cdot 1 = \underline{9}$$

$$13 \cdot 2 : (30 - 29) + 1 = \underline{27}$$

$$(28 \cdot 1) + 36 : 2 - 2 = \underline{44}$$

$$(30 : 30) \cdot (40 - 3) + 7 = \underline{44}$$

Aufgabe 2

$$(35 - 24) \cdot (3 + 9) : 4 = \underline{33}$$

$$(37 - 25) : 1 + 1 \cdot 3 = \underline{15}$$

$$36 : 4 + (1 \cdot 13) - 11 = \underline{11}$$

$$2 \cdot 7 + 48 : (4 - 1) = \underline{30}$$

$$30 + (14 : 4) \cdot 8 - 28 = \underline{30}$$

$$8 : 2 + (3 \cdot 12) - 4 = \underline{36}$$

$$32 \cdot 1 + (29 - 5) : 4 = \underline{38}$$

$$(44 : 1) - (3 + 1) \cdot 10 = \underline{4}$$

Aufgabe 3

$$(4 : 2) \cdot 13 - \underline{2} + 6 = 30$$

$$1 \cdot 27 : \underline{3} + (26 - 20) = 15$$

$$2 \cdot 22 : (28 - 27) + \underline{3} = 47$$

$$(37 : 1) - \underline{1} \cdot (21 + 3) = 13$$

$$39 - (\underline{6} : 8) \cdot (1 + 3) = 36$$

$$26 : 26 \cdot (\underline{4} + 30) - 30 = 4$$

$$2 \cdot (21 - \underline{36}) : 2 + 21 = 6$$

$$10 \cdot \underline{4} : (9 - 7) + 8 = 28$$

Aufgabe 4

$$(11 + 4) \cdot (19 - 13) : \underline{3} = 30$$

$$9 + 8 \cdot (\underline{35} - 5) : 15 = 25$$

$$23 + \underline{3} - 14 \cdot (1 : 2) = 19$$

$$44 : \underline{11} \cdot 5 + (44 - 48) = 16$$

$$(1 \cdot \underline{12}) + (37 : 1) - 28 = 21$$

$$(12 \cdot 1) - 2 + \underline{16} : 2 = 18$$

$$(33 - \underline{6}) : (4 + 5) \cdot 1 = 3$$

$$(5 + 37) - (18 : \underline{3}) \cdot 1 = 36$$