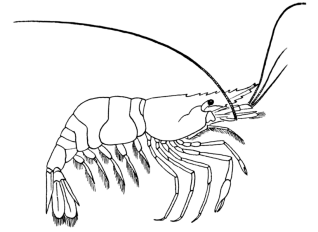


Name: \_\_\_\_\_ Datum: \_\_\_\_\_

<http://aufgaben.schulkreis.de>

## Übungsaufgaben: Multiplikation bis 1000 - Bl. 7



Teil 1

$35 * \underline{\quad} = 140$

$\underline{\quad} * 5 = 95$

$237 * 1 = \underline{\quad}$

$26 * \underline{\quad} = 182$

$201 * \underline{\quad} = 201$

$812 * \underline{\quad} = 812$

$\underline{\quad} * 1 = 408$

$520 * 1 = \underline{\quad}$

$207 * \underline{\quad} = 828$

Teil 2

$128 * \underline{\quad} = 256$

$347 * 1 = \underline{\quad}$

$31 * 1 = \underline{\quad}$

$8 * \underline{\quad} = 320$

$10 * 4 = \underline{\quad}$

$263 * 2 = \underline{\quad}$

$13 * 3 = \underline{\quad}$

$530 * \underline{\quad} = 530$

$283 * \underline{\quad} = 566$

Teil 3

$92 * \underline{\quad} = 368$

$\underline{\quad} * 1 = 422$

$41 * \underline{\quad} = 369$

$\underline{\quad} * 6 = 144$

$\underline{\quad} * 2 = 102$

$385 * \underline{\quad} = 385$

$65 * 8 = \underline{\quad}$

$\underline{\quad} * 5 = 200$

$\underline{\quad} * 1 = 754$

Teil 4

$222 * \underline{\quad} = 222$

$44 * \underline{\quad} = 704$

$\underline{\quad} * 1 = 327$

$\underline{\quad} * 3 = 339$

$11 * \underline{\quad} = 22$

$176 * 1 = \underline{\quad}$

$189 * \underline{\quad} = 567$

$151 * \underline{\quad} = 151$

$8 * \underline{\quad} = 152$

Teil 5

$395 * \underline{\quad} = 395$

$\underline{\quad} * 3 = 459$

$\underline{\quad} * 14 = 882$

$\underline{\quad} * 2 = 446$

$\underline{\quad} * 1 = 536$

$749 * 1 = \underline{\quad}$

$\underline{\quad} * 5 = 230$

$79 * \underline{\quad} = 79$

$7 * \underline{\quad} = 455$

Teil 6

$162 * \underline{\quad} = 810$

$350 * \underline{\quad} = 350$

$4 * 20 = \underline{\quad}$

$155 * 1 = \underline{\quad}$

$\underline{\quad} * 2 = 270$

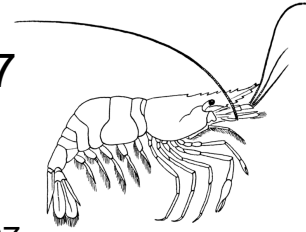
$\underline{\quad} * 13 = 325$

$602 * 1 = \underline{\quad}$

$\underline{\quad} * 5 = 355$

$188 * 3 = \underline{\quad}$

# LÖSUNGEN: Multiplikation bis 1000 - Bl. 7



## Teil 1

$35 \cdot 4 = 140$

$19 \cdot 5 = 95$

$237 \cdot 1 = 237$

$26 \cdot 7 = 182$

$201 \cdot 1 = 201$

$812 \cdot 1 = 812$

$408 \cdot 1 = 408$

$520 \cdot 1 = 520$

$207 \cdot 4 = 828$

## Teil 2

$128 \cdot 2 = 256$

$347 \cdot 1 = 347$

$31 \cdot 1 = 31$

$8 \cdot 40 = 320$

$10 \cdot 4 = 40$

$263 \cdot 2 = 526$

$13 \cdot 3 = 39$

$530 \cdot 1 = 530$

$283 \cdot 2 = 566$

## Teil 3

$92 \cdot 4 = 368$

$422 \cdot 1 = 422$

$41 \cdot 9 = 369$

$24 \cdot 6 = 144$

$51 \cdot 2 = 102$

$385 \cdot 1 = 385$

$65 \cdot 8 = 520$

$40 \cdot 5 = 200$

$754 \cdot 1 = 754$

## Teil 4

$222 \cdot 1 = 222$

$44 \cdot 16 = 704$

$327 \cdot 1 = 327$

$113 \cdot 3 = 339$

$11 \cdot 2 = 22$

$176 \cdot 1 = 176$

$189 \cdot 3 = 567$

$151 \cdot 1 = 151$

$8 \cdot 19 = 152$

## Teil 5

$395 \cdot 1 = 395$

$153 \cdot 3 = 459$

$63 \cdot 14 = 882$

$223 \cdot 2 = 446$

$536 \cdot 1 = 536$

$749 \cdot 1 = 749$

$46 \cdot 5 = 230$

$79 \cdot 1 = 79$

$7 \cdot 65 = 455$

## Teil 6

$162 \cdot 5 = 810$

$350 \cdot 1 = 350$

$4 \cdot 20 = 80$

$155 \cdot 1 = 155$

$135 \cdot 2 = 270$

$25 \cdot 13 = 325$

$602 \cdot 1 = 602$

$71 \cdot 5 = 355$

$188 \cdot 3 = 564$