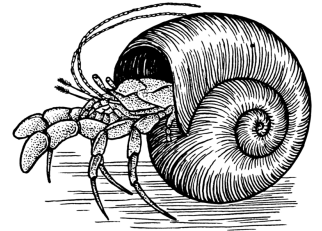


Name: \_\_\_\_\_ Datum: \_\_\_\_\_

<http://aufgaben.schulkreis.de>

## Übungsaufgaben: Multiplikation bis 1000 - Bl. 3



Teil 1

$_____ * 1 = 846$

$117 * 6 = _____$

$507 * _____ = 507$

$56 * 1 = _____$

$_____ * 5 = 695$

$_____ * 2 = 222$

$331 * _____ = 331$

$_____ * 2 = 150$

$155 * 2 = _____$

Teil 2

$8 * 4 = _____$

$91 * 7 = _____$

$762 * 1 = _____$

$463 * _____ = 463$

$_____ * 1 = 83$

$_____ * 1 = 466$

$701 * 1 = _____$

$177 * 4 = _____$

$_____ * 2 = 284$

Teil 3

$486 * _____ = 486$

$442 * _____ = 442$

$149 * 1 = _____$

$387 * _____ = 774$

$774 * _____ = 774$

$_____ * 15 = 150$

$196 * 1 = _____$

$329 * 1 = _____$

$110 * 1 = _____$

Teil 4

$760 * _____ = 760$

$_____ * 2 = 852$

$_____ * 320 = 320$

$280 * _____ = 840$

$184 * 3 = _____$

$19 * 16 = _____$

$157 * 4 = _____$

$15 * 2 = _____$

$904 * _____ = 904$

Teil 5

$119 * 5 = _____$

$30 * 22 = _____$

$_____ * 1 = 65$

$_____ * 3 = 198$

$55 * _____ = 220$

$708 * 1 = _____$

$148 * 4 = _____$

$_____ * 1 = 547$

$512 * _____ = 512$

Teil 6

$279 * _____ = 279$

$454 * 1 = _____$

$207 * 3 = _____$

$182 * 2 = _____$

$481 * 1 = _____$

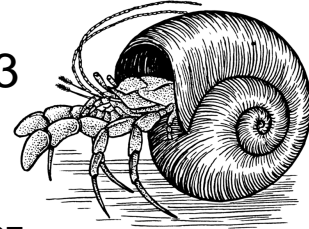
$_____ * 1 = 50$

$_____ * 1 = 431$

$_____ * 2 = 360$

$_____ * 1 = 371$

# LÖSUNGEN: Multiplikation bis 1000 - Bl. 3



Teil 1	$846 \cdot 1 = 846$	$117 \cdot 6 = 702$	$507 \cdot 1 = 507$
	$56 \cdot 1 = 56$	$139 \cdot 5 = 695$	$111 \cdot 2 = 222$
	$331 \cdot 1 = 331$	$75 \cdot 2 = 150$	$155 \cdot 2 = 310$
Teil 2	$8 \cdot 4 = 32$	$91 \cdot 7 = 637$	$762 \cdot 1 = 762$
	$463 \cdot 1 = 463$	$83 \cdot 1 = 83$	$466 \cdot 1 = 466$
	$701 \cdot 1 = 701$	$177 \cdot 4 = 708$	$142 \cdot 2 = 284$
Teil 3	$486 \cdot 1 = 486$	$442 \cdot 1 = 442$	$149 \cdot 1 = 149$
	$387 \cdot 2 = 774$	$774 \cdot 1 = 774$	$10 \cdot 15 = 150$
	$196 \cdot 1 = 196$	$329 \cdot 1 = 329$	$110 \cdot 1 = 110$
Teil 4	$760 \cdot 1 = 760$	$426 \cdot 2 = 852$	$1 \cdot 320 = 320$
	$280 \cdot 3 = 840$	$184 \cdot 3 = 552$	$19 \cdot 16 = 304$
	$157 \cdot 4 = 628$	$15 \cdot 2 = 30$	$904 \cdot 1 = 904$
Teil 5	$119 \cdot 5 = 595$	$30 \cdot 22 = 660$	$65 \cdot 1 = 65$
	$66 \cdot 3 = 198$	$55 \cdot 4 = 220$	$708 \cdot 1 = 708$
	$148 \cdot 4 = 592$	$547 \cdot 1 = 547$	$512 \cdot 1 = 512$
Teil 6	$279 \cdot 1 = 279$	$454 \cdot 1 = 454$	$207 \cdot 3 = 621$
	$182 \cdot 2 = 364$	$481 \cdot 1 = 481$	$50 \cdot 1 = 50$
	$431 \cdot 1 = 431$	$180 \cdot 2 = 360$	$371 \cdot 1 = 371$